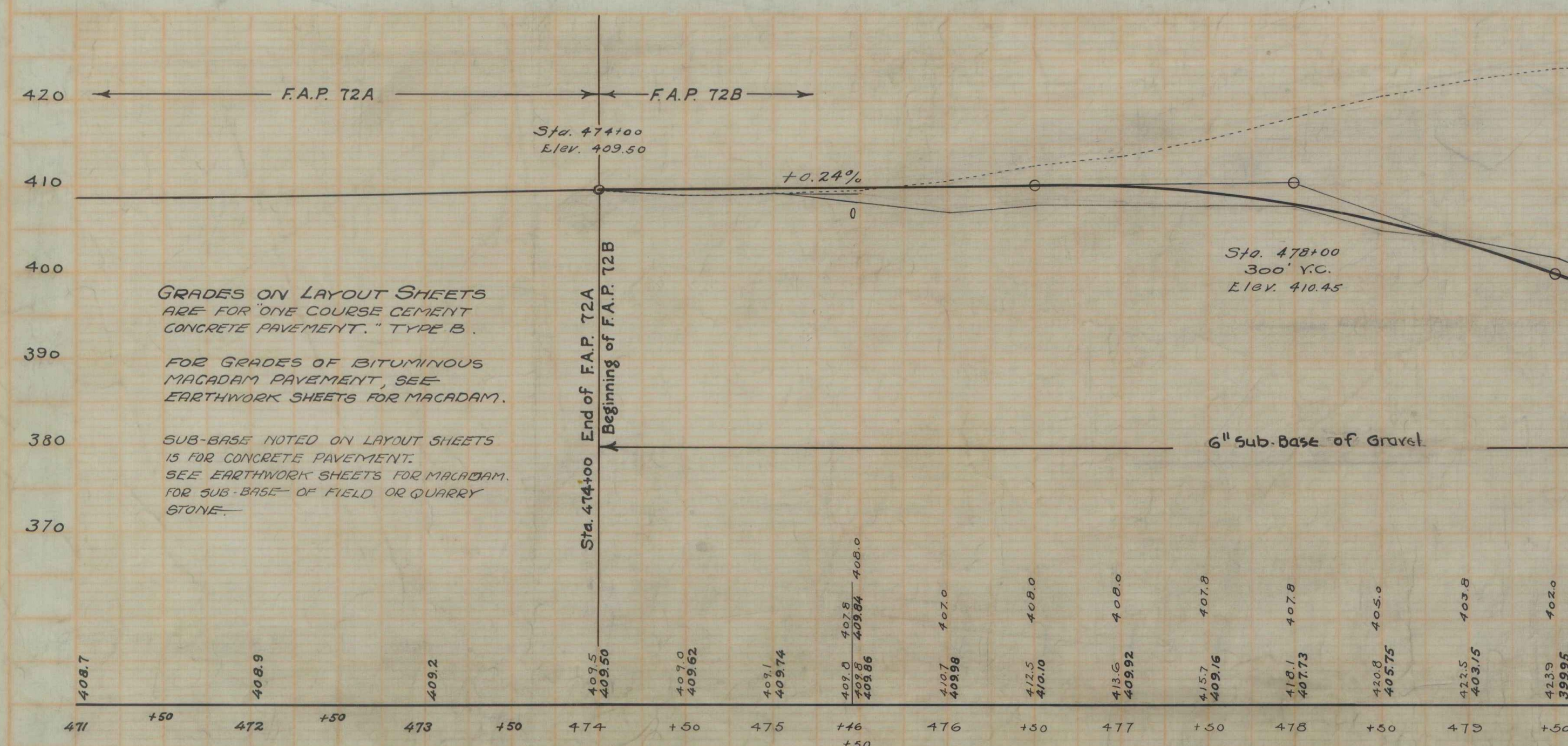
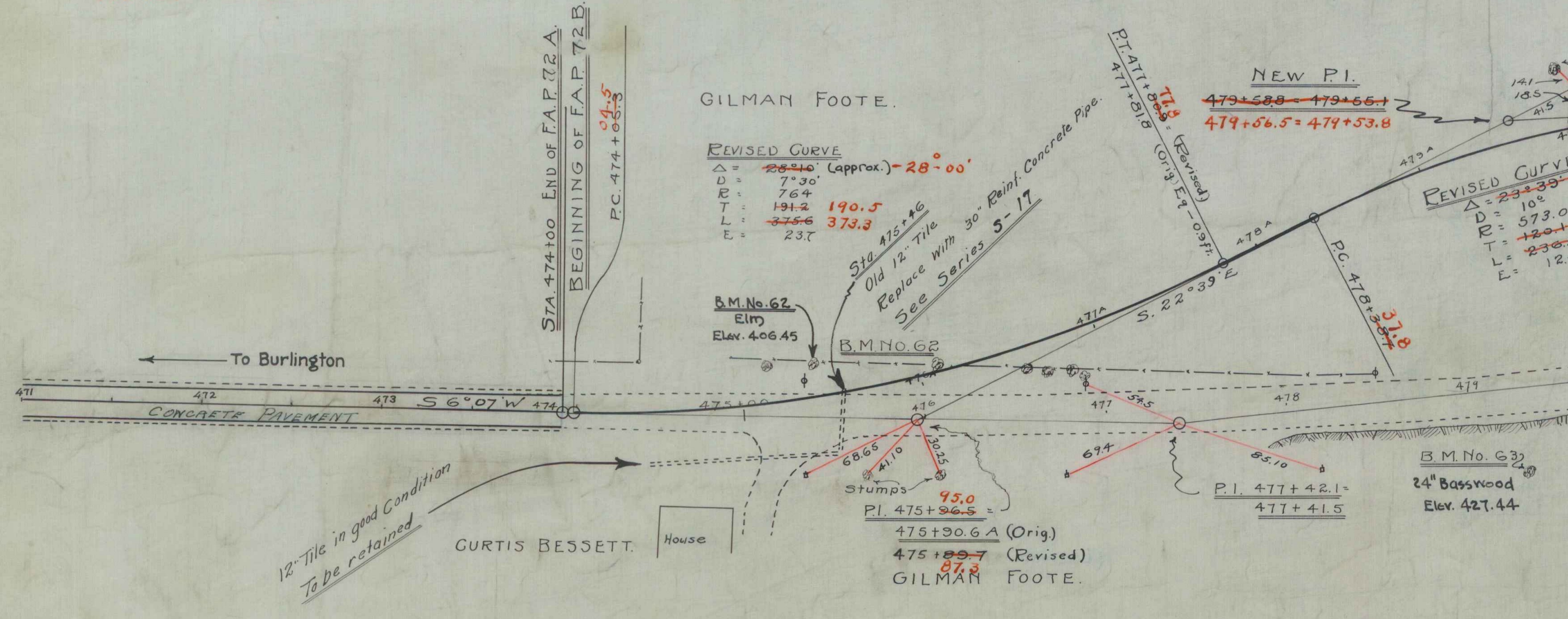


CABLE GUARD RAIL REQUIRED
LEFT
 Sta. 475+00 to 475+04 Length 40 ft.
 " 481+16 " 483+40 " 24 ft.
 " 484+50 " 485+00 " 50 ft.

WOOD GUARD RAIL REQUIRED
RIGHT
 Sta. 475+34 to Sta. 475+58 Length 24 ft.
 " 482+88 " 483+12 " 24 ft.
LEFT
 " 475+34 " 475+58 " 24 ft.

NEW CULVERTS REQUIRED.
 Sta. 475+46 - 30" Reinf. Concrete Pipe Culvert 40 lin. ft.
 Concrete Class A (1-2-4) 35 cu. yds.
 Reinforcing Steel 66 pounds.
 " 483+00 - 18" Reinf. Concrete Pipe Culvert 32 lin. ft.
 Concrete Class A (1-2-4) 1.07 cu. yds.
 " " B (1-2 1/2-5) 0.82 " "
 Reinforcing Steel 45 lbs

SUB-BASE OF GRAVEL REQUIRED
 Sta. 477+00 to 485+00. 6" Sub-base of Gravel



B.M. No. 62 Spike in Elm. Left of Sta. 475+11 Elev. 406.45
 B.M. No. 63 Spike in 24" Basswood Right of Sta. 479+32 Elev. 427.44
 B.M. No. 64 Point Point on Ledge Right of Sta. 483+62 Elev. 412.45

12/26
H.W.M.
G.H.C.

12/27
H.W.M.
G.H.C.